

## BOARD OF EDUCATION

Shari Bardash-Eivers, *President*  
Stephen G. Wilson, *Vice-President*

### *Trustees*

John E. Capobianco  
Russ Catanzaro  
Tina Diamond  
Kathy Lively  
Rick Morrison  
.....

John Lorentz  
*Superintendent*

## LOBBY COMMITTEE

John E. Capobianco  
Tina Diamond  
Rick Morrison  
*Board of Education*

Mary Lou Arangio  
*Farmingdale CSEA*

Steve Kramer  
*Farmingdale Federation of Teachers*

Philip J. Acinapuro / Barbara J. Brady  
*Community Representatives*

Paul Defendini  
Barbara J. Horsley  
*Farmingdale Public Schools*

Erich Glanz  
*Farmingdale Association of  
Administrators & Supervisors*

Roz Pelligrino / Mary Washauer  
*Farmingdale PTA*

Laura Ulric  
*President, Board of Trustees  
Farmingdale Library Board*

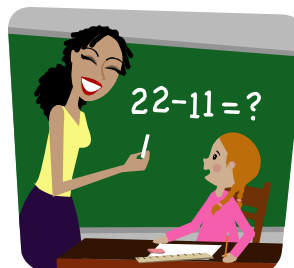
Kenneth M. Ulric  
*Friends of the Farmingdale Library*

# MANDATES...

## Fund Them

or

## Forget Them!



### Farmingdale Public Schools

50 Van Cott Avenue

Farmingdale, NY 11735

Phone: (516) 752-6666

Fax: (516) 752-3025

[www.farmingdaleschools.org](http://www.farmingdaleschools.org)

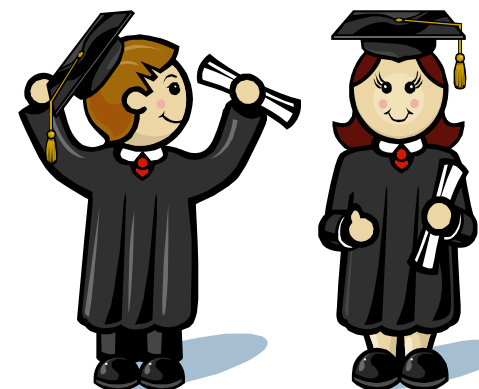


... education for today and tomorrow

## FARMINGDALE LOBBY COMMITTEE

## LEGISLATIVE PROPOSALS

### 2009 - 2010



### Farmingdale Public Schools

## **LEGISLATIVE PROPOSALS**

*The Farmingdale Lobby Committee will keep the public and the media informed of the impact that the state legislative, administrative and federal programs will have on the Farmingdale School District and its taxpayers. We will vigorously pursue increases in Federal and State Aid to Education to support Farmingdale School District programs.*

### ◆ **PROPERTY TAX CAP**

The Governor and Legislature must correct the proposals for a property tax cap that, if adopted, will not only perpetuate but also will increase the resource gap between rich and poor school districts. We propose that an intelligent and appropriately constructed tax cap must include a circuit breaker.

### ◆ **A REGIONAL COST FACTOR MUST BE A PART OF THE STATE FOUNDATION AID FORMULA**

The state must recognize regional cost differences within the state to assure that dollars allocated to Long Island schools have the same buying power as dollars allocated to schools in other regions of the state. The purchasing power of \$1,000 on Long Island is only \$668.

### ◆ **TAX REFUNDS ARE NOT OUR RESPONSIBILITY**

The legislature must protect school districts from responsibility for the tax refunds that result from certioraris. These changes in assessment are not the responsibility of the local school district and should not be part of the school district budget.

### ◆ **UNFUNDED MANDATES**

The legislature should require the careful research and analysis of proposed mandates involving public schools in order to identify potential cost implications. If additional costs will be incurred as a result of new mandates, these costs should be fully funded through additional state support.

- ◆ All students who take the Geometry, Integrated Algebra, and Math B Regents Exams are required to use graphing calculators. Math regents exams have been given on the same day at the same time. The retail price is \$140 per calculator.

*500 students X \$140—\$70,000 mandate assuming we make the students share the calculators in shifts. It is a \$210,000 mandate if each student has one calculator for use at school and home.*

- ◆ NCLB testing requirements (G-3-8)
- ◆ One-year teacher mentoring requirement
- ◆ Defibrillators required in all school buildings and at extracurricular events
- ◆ School bus attendants' safety training
- ◆ Period by period attendance requirement
- ◆ Record keeping for 175 hours of teacher professional development
- ◆ Increased internal auditor requirements
- ◆ Academic intervention service required
- ◆ District of residence required to pay tuition for students attending charter schools

### ◆ **WICKS LAW EXEMPTION**

School construction projects should be exempt from the Wicks Law as they are for the New York City Public Schools. Eliminating the required bidding process for each trade will save school districts time and will reduce project costs. Millions of dollars are added to construction costs as a result of the Wicks Law.

### ◆ **SUPPORT STUDENTS AT RISK**

Special Education and Limited English Proficient students are at high risk for not meeting the new State standards, putting their graduation in jeopardy. Creative collaboration programs will be necessary to provide these students with access to general education classrooms so that they will reach the new standards.

It is important that the aid that is tied to special education students remain uncapped so that the school district is not limited in its ability to meet the needs of students. In addition, the aid provided for special education students who are placed in private and BO-CES programs must be maintained.

### ◆ **CHARTER SCHOOLS**

Charter schools have been established in Suffolk and Nassau Counties and have caused public funds to be redirected from public schools to profit-making corporations.

The state must assure that the funding of the charter schools does not adversely impact the funding of public schools and that charter schools are held to the same high academic standards as public schools.