



Post High School Plans  
APPLICATION PROCESS:  
WHAT DOES THE STUDENT  
DO NOW?



# SURVIVING SENIOR YEAR



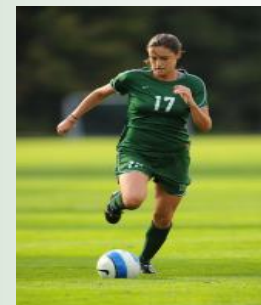
- **Graduation Requirements**
  - Senior year should continue to be rigorous
- **Review transcript/schedule**
  - the student's high school academic record.
  - types of courses pursued.
  - level of difficulty of courses.
  - grade point average.
  - marked improvement in their scholastic achievement from year-to-year.



# HOW DO COLLEGES CHOOSE AMONG APPLICANTS?



- The high school transcript is extremely important BUT colleges do consider other factors when assessing applicants.
- Letters of recommendation from the counselor, teachers, administrators and others. (Only send what they ask for)
- Standardized exams. (SAT I-Reasoning Test, SAT II-Subject Tests, ACT, AP)
- Indication of special ability: art, music, leadership or athletics.
- Service to the school and community.  
An activity sheet goes a long way in the college selection process.
- Neatness, accuracy, and timeliness of the application.
- Your college essay.
- The personal interview (if required).
- And your demonstrated interest in the college (campus visit, college fair or e-mail)



# GETTING TO KNOW COLLEGES



- Mini College Day - visits at FHS.
- College Fairs

**SUNY College Fair: Monday, Sept. 19, 2011 at Farmingdale State College, Nold Hall from 5:30 p.m. to 9:30 p.m.**

***College Expo: Sunday, Sept. 25, 2011 from 12:00 noon - 3:00 p.m. at SUNY College- Old Westbury***

***Long Island College Fair: Sunday, October 2, 2011, from 11:00 a.m. - 4:00 p.m. at Nassau Veterans Memorial Coliseum***

***WSCA College Fair: Thursday, Oct. 18, 2011, from 6:00 p.m. - 8:30 p.m.***



**INDIVIDUAL COLLEGE WEBSITES - [www.collegename.edu](http://www.collegename.edu)**



# STAY ORGANIZED



- APPLICATION DEADLINES -
- check each college's website
- ED/EA - Early Decision/Early
- Action/Single Choice EA
- ROLLING
- REGULAR





# Do Your Homework

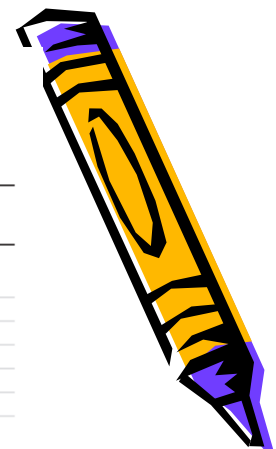


# RUN the NUMBERS



## Admissions Information Summary – 2011

For more information call our toll-free number at 800-342-3811 or visit us on the web at [www.suny.edu/student](http://www.suny.edu/student)



Campus Name (By campus type)	Undergraduate Enrollment	SAT Scores**ACT Scores (combined) (composite)		H.S. GPA	Early Decision (ED) or Early Action (EA)		EOP Admission Program	ESL Courses	Joint Admissions	Teaching Certificate	Honors Program	Time Shortened Degree	ROTC
		Score reflect middle 50%	Score		ED	EA							
<b>University Centers and Doctoral Degree Granting Institutions</b>													
Albany	12,959	1110-1250	24-28	88-94	EA	Yes	Yes	Yes	Yes	Grad level	Yes	No	A*, AF*
Binghamton	11,787	1180-1340	26-31	91-97	EA	Yes	Yes	Yes	Yes	Grad level	Yes	Yes	A*, AF*, M*
University at Buffalo**	19,395	1120-1270	25-29	89-95	ED	Yes	Yes	Yes	Yes	Grad level	Yes	No	A*
Stony Brook**	16,342	1170-1310	25-29	88-95	No	Yes	Yes	Yes	Yes	Yes	Yes	No	
NYS Ceramics at Alfred University	631	990-1200	21-27	84-92	ED	Yes	Yes	No	No	Yes*	Yes	No	A*
College of Optometry	Graduate and Professional Degrees Only				No	No	No	No	No	No	No	No	
<b>Cornell University:</b>													
Agriculture & Life Sciences	3,390	--	--	--	ED	Yes	Yes	Yes	Yes	Yes	Yes	Yes	A, AF, M, N
Human Ecology	1,208	1280-1440	28-32	--	ED	Yes	Yes	No	No	Yes	Yes	No	A, AF, M, N
Veterinary Medicine+	Graduate Level Only				ED	No	No	No	No	No	No	No	
Industrial & Labor Relations	905	1300-1450	29-32	--	ED	Yes	Yes	No	No	No	Yes	No	A, AF, M, N
Environmental Science & Forestry	1,650	1110-1280	24-37	89-94	ED	Yes	Yes	Yes*	No	Yes*	Yes	No	A*, AF*
Downtown Medical Center (Brooklyn)	343+	--	--	--	No	Yes	Yes	No	No	No	No	No	
Upstate Medical University (Syracuse)	305	--	--	--	No	Yes	Yes	No	Yes	No	No	No	
<b>University Colleges</b>													
Brockport	7,297	1030-1170	22-25	88-93	No	Yes	Yes	No	Yes	Yes	Yes	Yes	A, AF*, N*
Buffalo State	9,788	950-1110	20-24	84-90	ED	Yes	Yes	No	Yes	Yes	Yes	No	A*
Cortland	6,040	1050-1175	22-26	88-94	EA	Yes	Yes	Yes	Yes	Yes	Yes	No	A*, AF*
Fredonia	5,388	1040-1200	22-26	87-92	ED	Yes	Yes	Yes	Yes	Yes	Yes	Yes	
Geneseo	4,950	1290-1370	27-30	91-96	ED	Yes	Yes	Yes	Yes	Yes	Yes	No	A*, AF*
New Paltz	6,582	1110-1300	24-29	89-94	EA	Yes	Yes	Yes	Yes	Yes	Yes	Yes	
Old Westbury	4,355	990-1110	22-24	84-90	EA	Yes	Yes	Yes	Yes	Yes	Yes	Yes	A*, AF*
Oneonta	5,700	1060-1170	23-26	88-93	EA	Yes	Yes	Yes	No	Yes	Yes	Yes	
Oswego	7,300	1050-1200	22-27	87-93	ED	Yes	Yes	Yes	Yes	Yes	Yes	No	A*, AF*
Plattsburgh	5,859	1000-1130	21-25	85-91	ED	Yes	Yes	Yes	No	Yes	Yes	Yes	A*
Potsdam	3,902	--	--	86-92	No	Yes	Yes	Yes	Yes	Yes	Yes	No	A*, AF*
Purchase	4,052	1060-1210	24-29	84-90	EA	Yes	Yes	No	No	No	No	No	
Empire State College	20,198	--	--	--	No	No	No	No	No	Grad level	No	Yes	
<b>Colleges of Technology</b>													
Alfred State	3,709	850-1060	18-24	79-86	No	Yes	Yes	Yes	Yes	No	Yes	No	A*
Baccalaureate only	878	1040-1200	22-26	87-93									
Canton	3,300	823-1008	17-23	77-84	No	Yes	Yes	Yes	Yes	No	Yes	No	A*, AF*
Baccalaureate only	890	860-1060	18-23	79-85									
Cobleskill	2,567	820-1020	18-22	78-86	No	Yes	Yes	Yes	Yes	No	Yes	No	
Baccalaureate only	942	880-1060	19-23	80-88									
Delhi	3,331	880-1100	16-21	76-82	No	Yes	Yes	Yes	Yes	No	Yes	No	
Baccalaureate only	938	980-1110	--	79-87									
Farmingdale State	6,857	950-1100	19-24	80-88	No	Yes	Yes	No	Yes	No	No	No	A*, AF*
Maritime College	1,600	1070-1150	20-24	85-92	ED	No	Yes	No	Yes	No	No	No	A*, AF*, CG*, M, N
Morrisville State	3,448	900-1040	19-22	79-84	No	Yes	Yes	No	Yes	No	No	No	A*
Baccalaureate only	606	960-1100	20-24	84-92									
SUNYIT	2,280	1000-1140	23-26	86-91	EA	Yes	Yes	No	Yes	No	No	Yes	A*, AF*

Abbreviations: A = Army, AF = Air Force, CG = Coast Guard, M = Marines, N = Navy

40:

\* Cross-registration offered at neighboring institutions

\*\* Enrollment includes Health Science Centers

\*\* The SAT ranges above represent combined critical reading and math scores (the maximum possible total is 1600). While most campuses base admissions decisions on math and critical reading sections of the SAT, prospective students should consult with campuses of interest to determine policies regarding the SAT writing score and for students taking the ACT, if the ACT writing component is required.

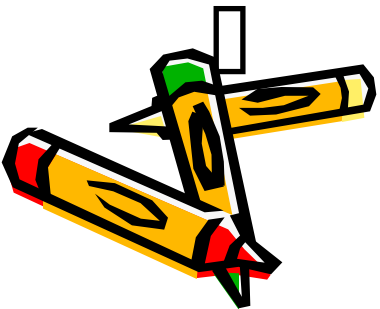
+ 2010 Data

OVER »

# A COMPLETE APPLICATION

- COLLEGES DO NOT CONSIDER YOUR APPLICATION COMPLETE WITHOUT:

- High School transcript
- Letter(s) of recommendation
- Official test scores sent from
  - testing agency
- Completed supplemental forms



# TYPES OF APPLICATIONS



APPLICATIONS CAN BE COMPLETED ELECTRONICALLY OR ON PAPER

COMMON APPLICATION - [www.commonapp.org](http://www.commonapp.org) OR  
[www.universalcollegeapp.com/](http://www.universalcollegeapp.com/)

INDIVIDUAL COLLEGES - check COLLEGE website, i.e.; [www.umich.edu](http://www.umich.edu)

STATE UNIVERSITY OF NEW YORK - [www.suny.edu/student](http://www.suny.edu/student)

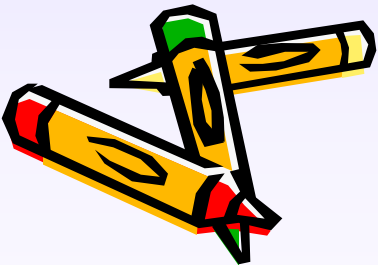
CITY UNIVERSITY - [www.cuny.edu](http://www.cuny.edu)

ALWAYS KEEP COPIES FOR YOUR RECORDS!



# THE PROCESS

- Submit your applications as soon as EACH ONE is complete.
- Give teachers the Letter of Recommendation Request ASAP.
- Fill out COLLEGE APPLICATION RECEIPT FORM (even if you apply online)
  - We need the *school report/counselor report* in order to send your transcript and counselor's letter of recommendation.
  - You need to include the address of each college.
  - Remember to send your test scores to the colleges!
  - Does your college require a Mid-Year Report?
- **IT TAKES TIME TO PROCESS APPLICATIONS. PLEASE HAND THEM IN AT LEAST TWO WEEKS BEFORE THE DEADLINE.**



# Financial Aid Information

- Come to the Financial Aid Workshop on Thursday, Jan. 19, 2012 at 7 p.m.
- Scholarship Bulletins
  - Distributed to Senior English teachers
  - Posted in the English classes
  - Posted outside Main Guidance
  - Available on the District website [www.farmingdaleschools.org](http://www.farmingdaleschools.org)



# Senior TO DO LIST



- Find out what financial aid forms and scholarship applications are needed and complete them in a timely fashion. (The CSS Profile can be completed now - the FAFSA cannot be completed until January 1, 2012.)
- Check the GUIDANCE website for new information.
- Meet with your counselor. Remember - a Transcript Request form is needed for each school you apply to. A school report is also needed. You are not alone - we are here to help you.
- Send official scores for SAT and/or ACT to colleges.
- [www.collegeboard.com](http://www.collegeboard.com) OR [www.actstudent.org](http://www.actstudent.org)
- Keep your grades strong! Many colleges request a copy of your MIDYEAR GRADES.



# Contact Information

752-6610 : Greeney, Herrero, Jensen & Verre.

752-6620: Mammolito, Mayerhofer, Molina & Reyes

Main Guidance - 752-6606

- Mrs. Moloughney

